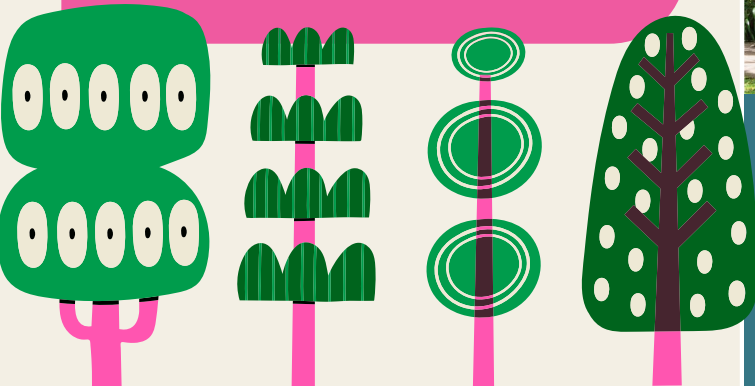


## I feel nervous about my tree dropping limbs. What should I do?

Many people panic when trees drop limbs or debris and believe the tree should be removed entirely. Most of the time these are perceived dangers. The Town employs suitably qualified personnel and contractors for all pruning and arboricultural assessments required on Town trees. Assessments on large and significant trees occur every two years as standard practice. Maintaining and protecting the trees that we have is vital for ensuring that our environment and cities remain livable for generations to come.

### Did you know?

A recent university study concluded that you have a 1 in 5 million chance of being killed by a tree when outdoors and a 1 in 189 million chance of being killed by a tree indoors. You are more likely to be attacked by a shark or injured in a car accident than by a tree. Research shows that for a branch to cause serious harm to property and people, it needs to be greater than 40 centimetres in diameter.



## Problems with neighbours' trees

Are your neighbour's trees or roots encroaching onto your property and creating issues? We encourage you to approach your neighbour and try to come to a reasonable solution. If you require assistance and are met with resistance from your neighbours, you can contact the Citizens Advice Bureau 9221 5711 or Legal Aid 1300 650 579.

## I want to remove a large tree in my garden, what should I do?

We encourage you to call us before removing a large or significant tree on private property. Preserving the urban tree canopy in Perth is vital for generations to come and tree removal should only be considered as a last resort.

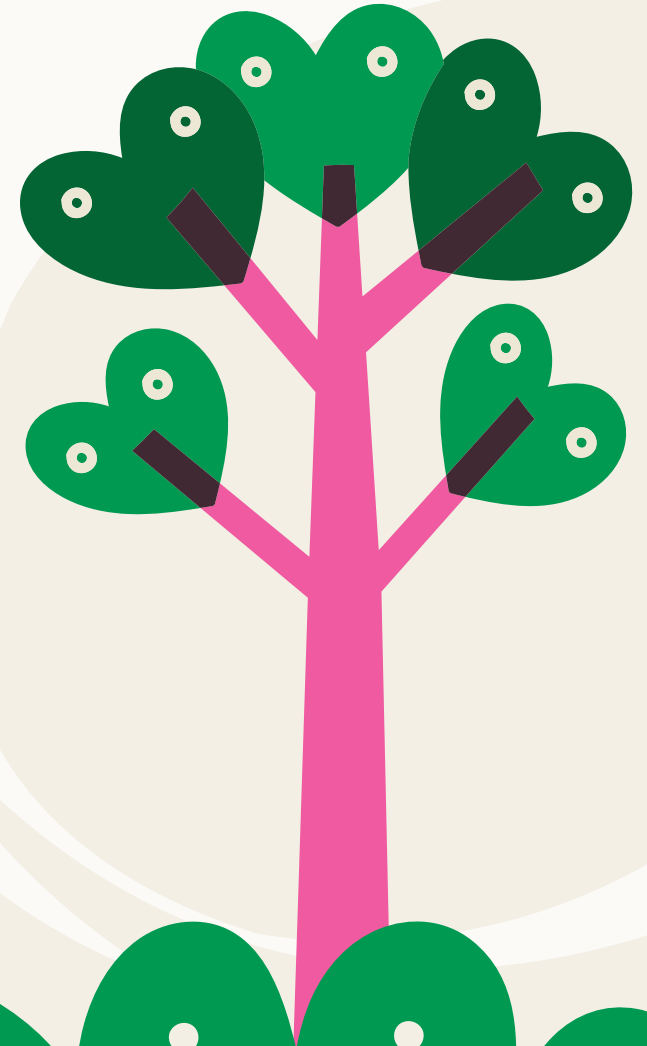


Town of Claremont  
308 Stirling Highway, Claremont 6010  
P: 9285 4300  
E: [toc@claremont.wa.gov.au](mailto:toc@claremont.wa.gov.au)  
[www.claremont.wa.gov.au](http://www.claremont.wa.gov.au)

This brochure is printed on recycled stock



# TOWN of CLAREMONT Street Trees



Your guide to all things trees



## How do I find out about all things tree related?

We get a lot of questions from you about trees, like, how do I go about pruning, who collects my fallen branches and general pruning and maintenance queries. So, we thought we would give you some handy tips!

Here at the Town, sustaining and enhancing our leafy streets is a critical step towards supporting a greener and cleaner environment. So, we want you to know the best practises when it comes to caring for our trees.

### Request for tree pruning

We prune our street trees annually which includes uplifting low branches over roads and footpaths to provide safe access for vehicles, pedestrians, and cyclists. We encourage our trees to grow as close to their natural form as possible and will only prune them for the following reasons:

- To improve vision and access for vehicles and pedestrians;
- To improve the health of the tree;
- For requirements of Western Power & Main Roads;
- For safety reasons.

### Trees won't be pruned or removed for any of these reasons:

- If branches are over private property boundaries;
- If there is a perceived danger that the tree or a limb may fall;
- To enhance or clear views;
- If the species is disliked;
- To thin the canopy;
- Allergy and/or health problems;
- To prevent nuts, seeds, fruit or flowers dropping;
- Too much shade over lawns, gardens, houses, pools, solar panels etc;
- For the installation of non-essential crossovers or verge paving.

Any unauthorised pruning, removal, poisoning or vandalism of trees within the Town, undertaken by persons other than the Town or its contractors, is an offence and prosecution will occur.

We have some great policy and guideline documents here that you can read which will give you further information [www.claremont.wa.gov.au/Parks-and-Recreation/Trees](http://www.claremont.wa.gov.au/Parks-and-Recreation/Trees)



### My street tree overhangs my fence, can I prune it?

If branches are overhanging your fence line, you can prune on your side of the property up to the boundary line and should be done using qualified arborists who are accredited members of the Tree Guild of WA. This is to ensure the correct pruning practises are followed for the safety and health of the tree. Pruning is not to be done over and onto Town land. Don't forget to send us a quote from the approved arborist outlining the scope of works for approval prior to the pruning works commencing.



Here is a helpful list of recommended arborists

[www.treeguildwa.asn.au/dev/contractors-guide/](http://www.treeguildwa.asn.au/dev/contractors-guide/)

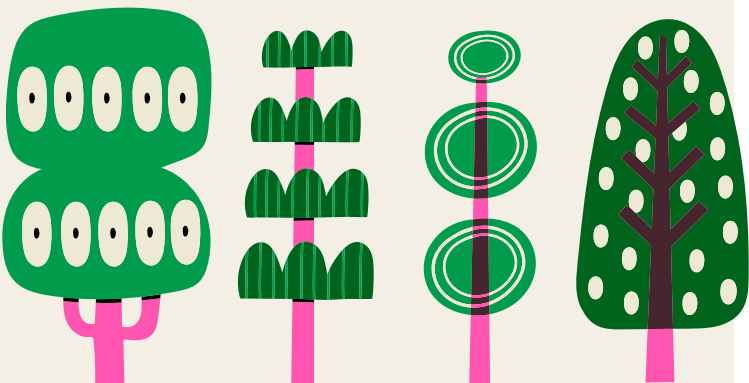
### Did you know?

Contrary to popular belief, heavy pruning does not make a tree safer. It can have the opposite effect due to the new growth being weaker than the original wood. Trees grow in a delicate balance with their surroundings and removing large limbs can negatively alter the way they grow, as well as increase the risk for infection and disease.

### Collection of fallen branches

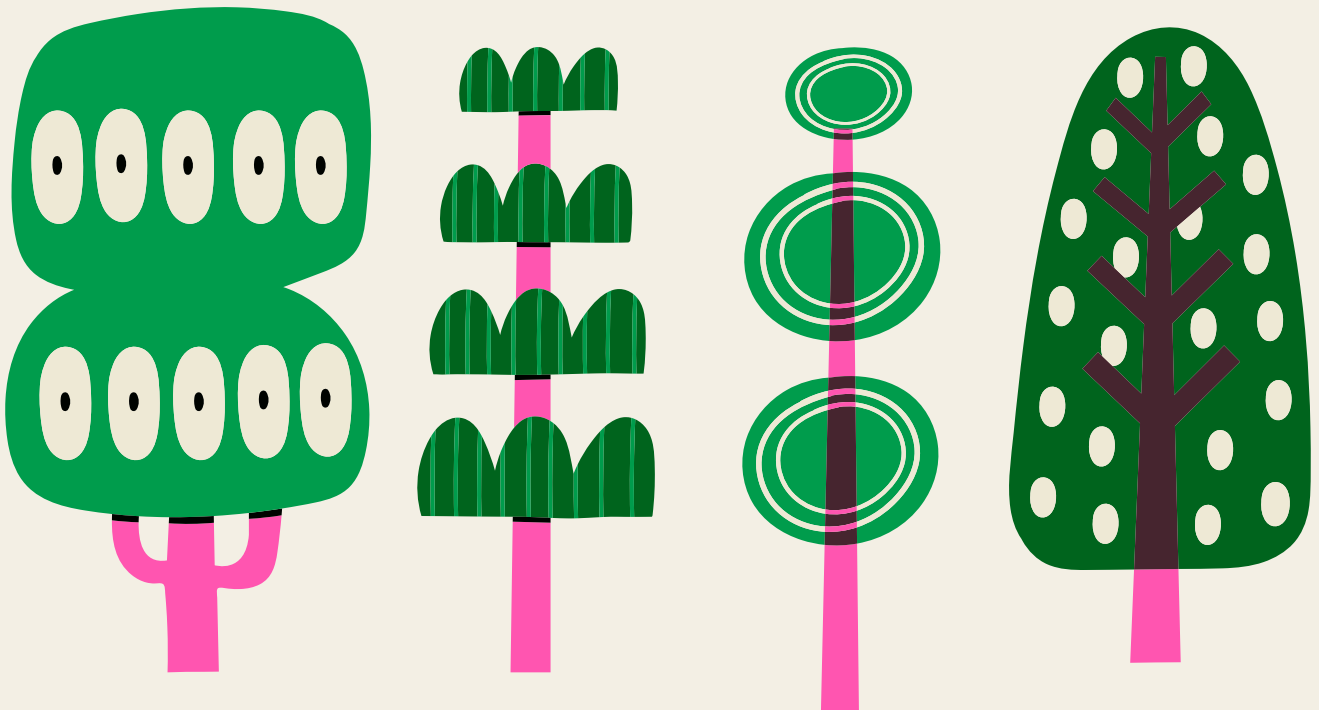
If a tree branch falls on the verge outside your property, we encourage you to place it in your green waste bin. If it is too big for the bin, please call 9285 4300 and a Parks Field Officer or contractor can attend to it.

Green waste collection occurs two times per year. You can find more information here



TOWN *of* CLAREMONT

# Street Tree Masterplan Community Consultation

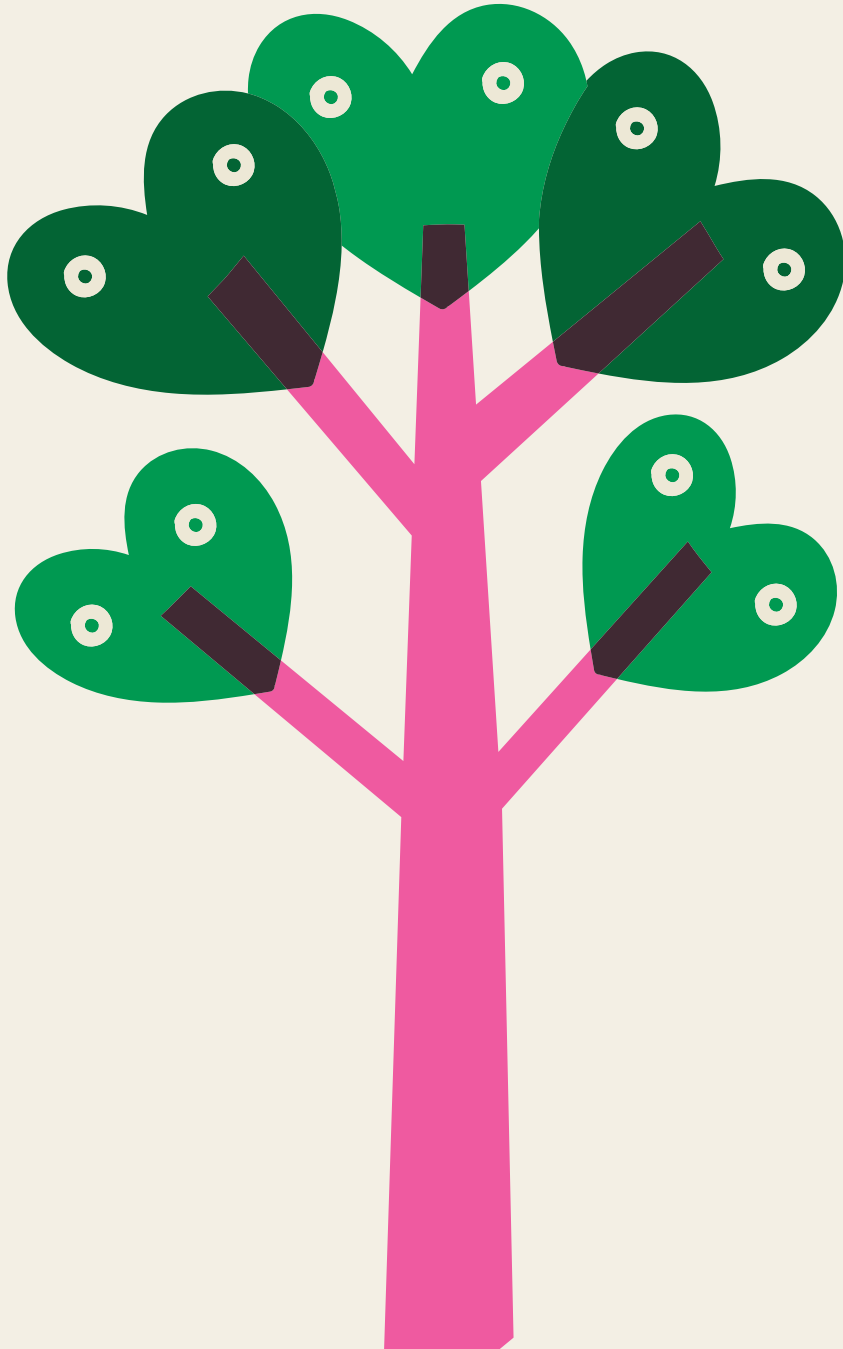


Please scan the QR code via your camera app on your compatible phone or tablet to find out more about changes to the Council's Street Tree Masterplan. Alternatively, please visit [www.claremont.wa.gov.au/Our-Town/Your-Community-Your-Say/STMPCC](http://www.claremont.wa.gov.au/Our-Town/Your-Community-Your-Say/STMPCC)

YOUR COMMUNITY - YOUR SAY

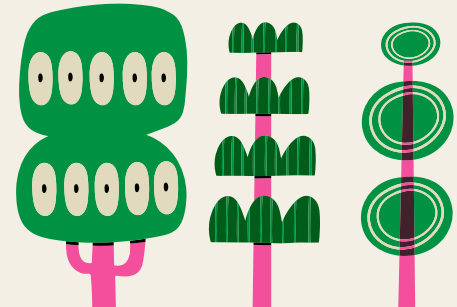
TOWN *of* CLAREMONT

# Street Tree Masterplan Community Consultation



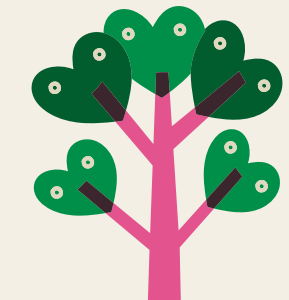
Please scan the QR code via your camera app on your compatible phone or tablet to find out more about changes to the Council's Street Tree Masterplan. Alternatively, please visit [www.claremont.wa.gov.au/Our-Town/Your-Community-Your-Say/STMPCC](http://www.claremont.wa.gov.au/Our-Town/Your-Community-Your-Say/STMPCC)

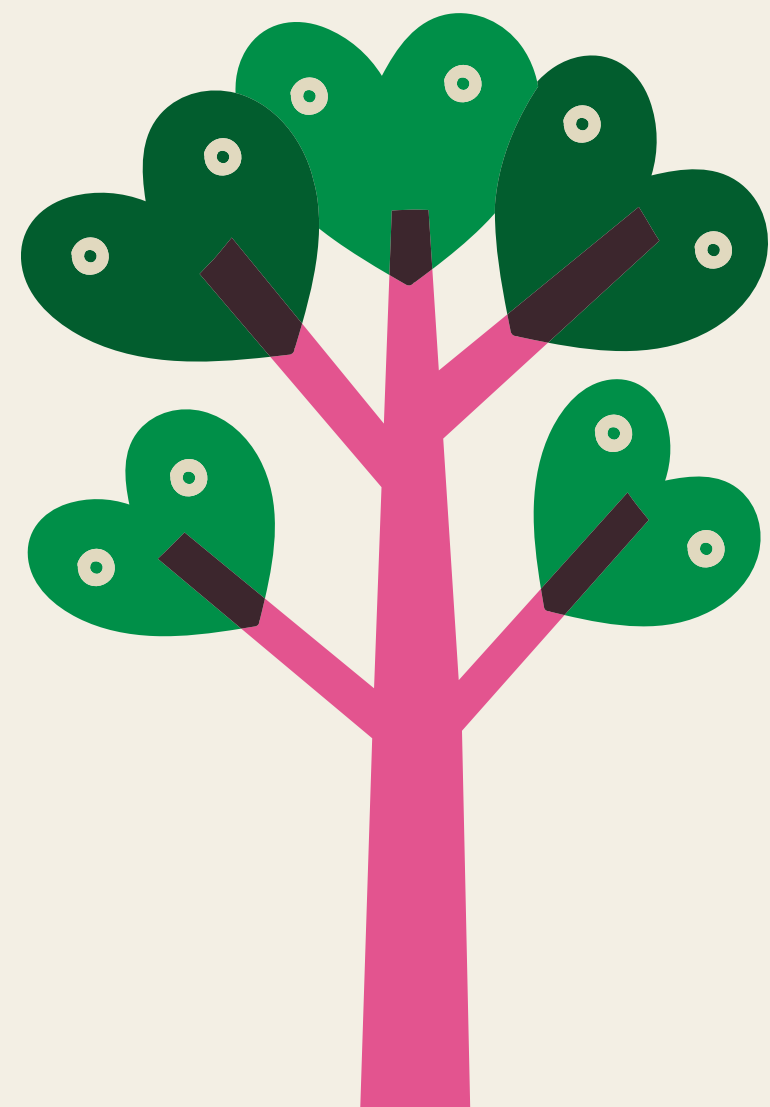
YOUR COMMUNITY - YOUR SAY



TOWN *of* CLAREMONT

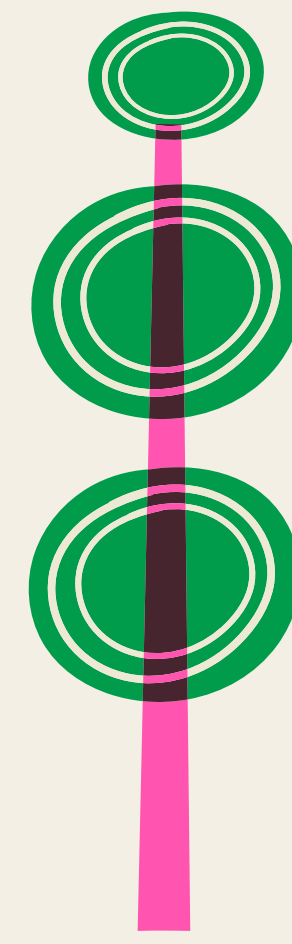
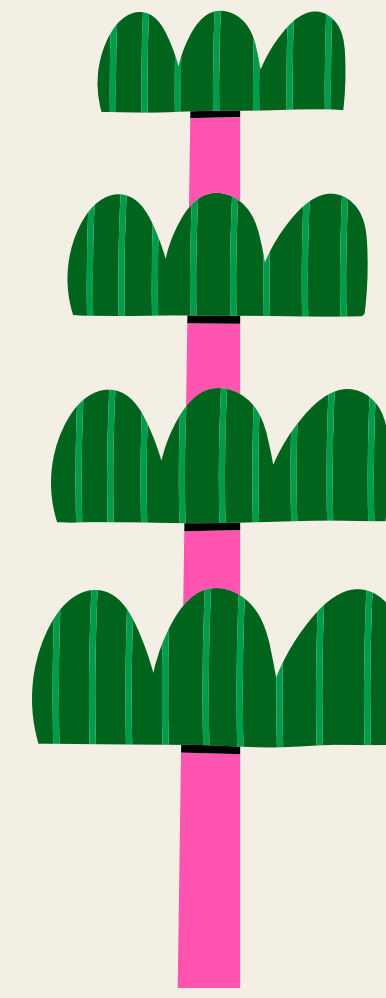
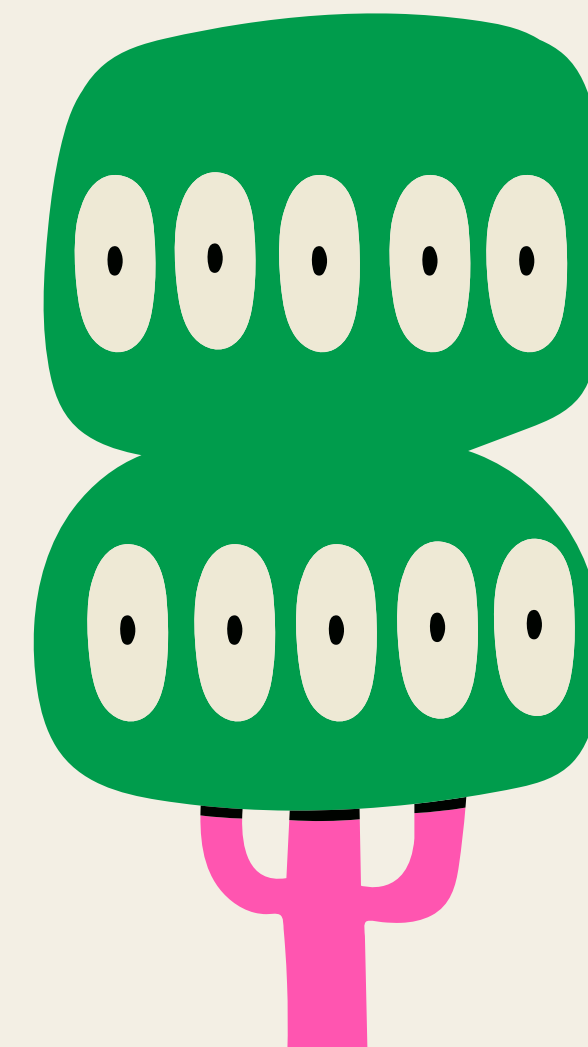
# Street Tree Masterplan Community Consultation

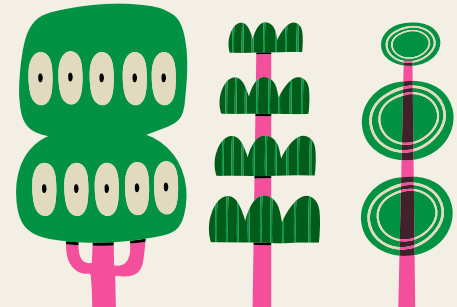




TOWN *of* CLAREMONT

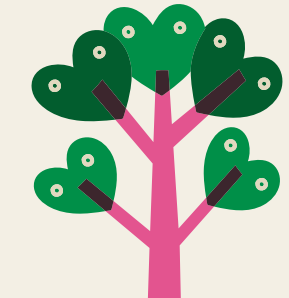
# Street Tree Masterplan Community Consultation

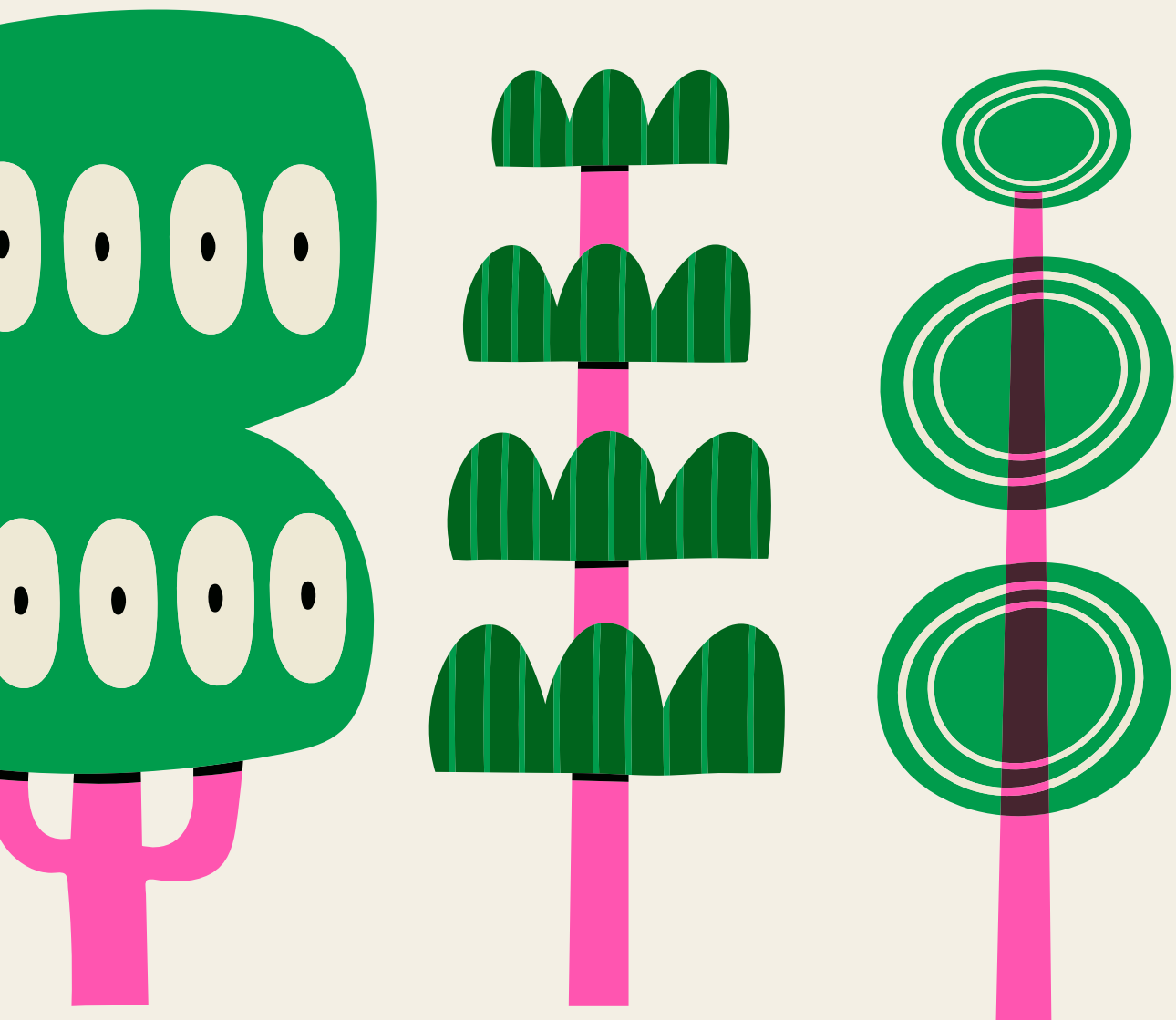




TOWN *of* CLAREMONT

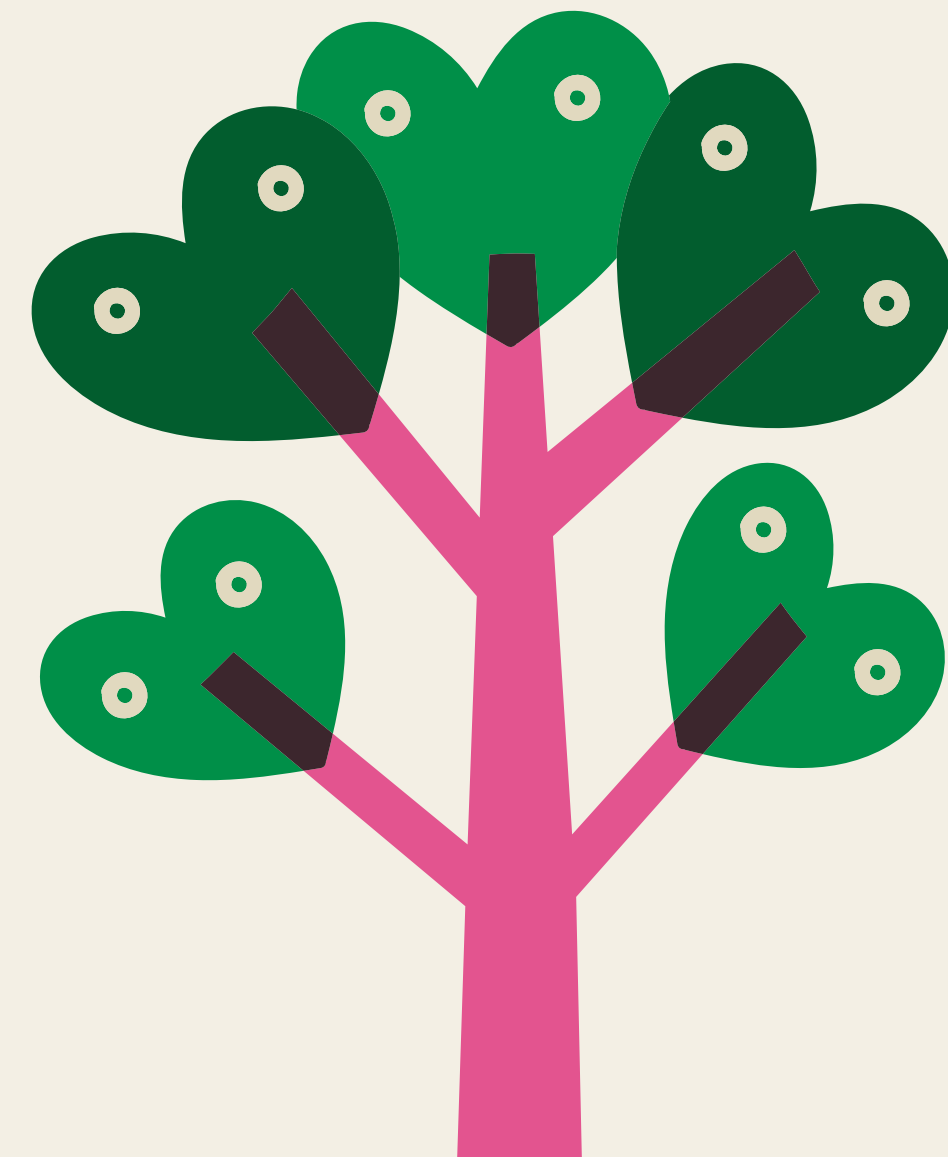
# Street Tree Masterplan Community Consultation





TOWN *of* CLAREMONT

# Street Tree Masterplan Community Consultation

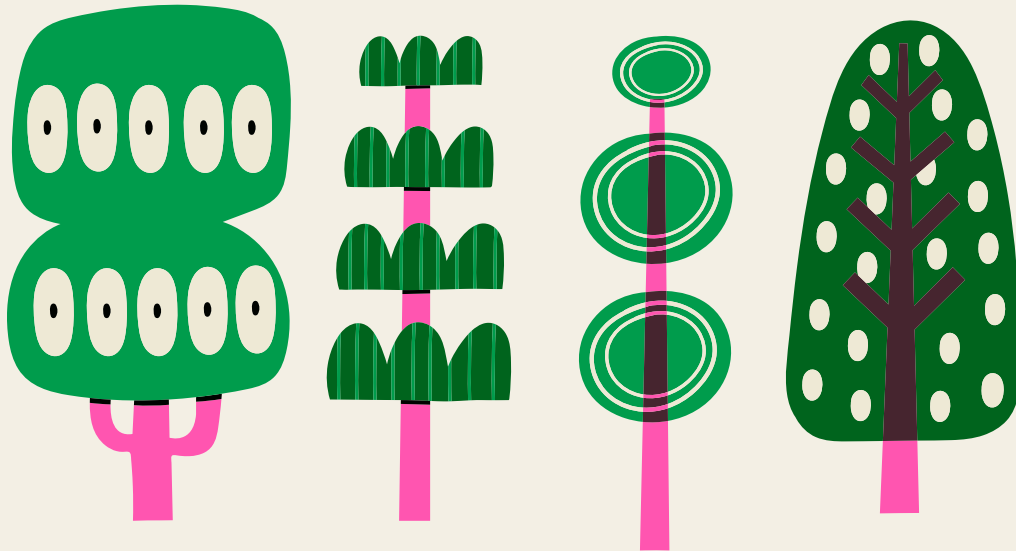






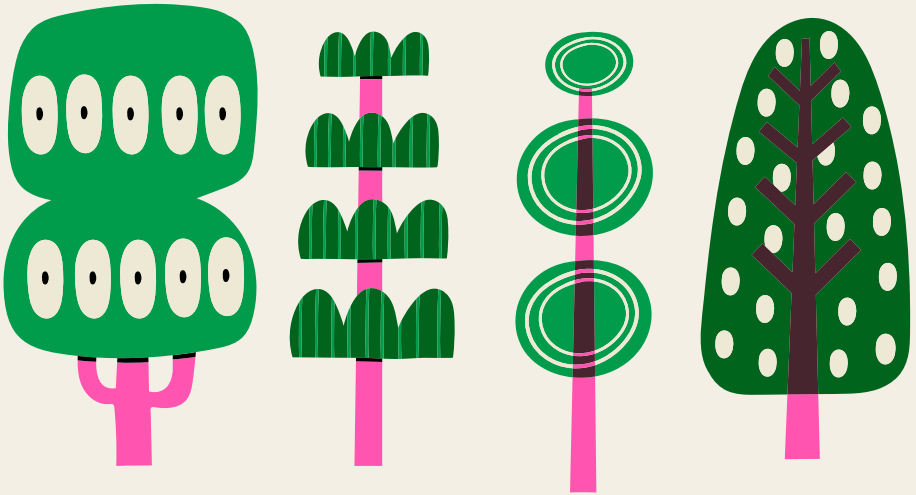
TOWN *of* CLAREMONT

# Street Trees



TOWN *of* CLAREMONT

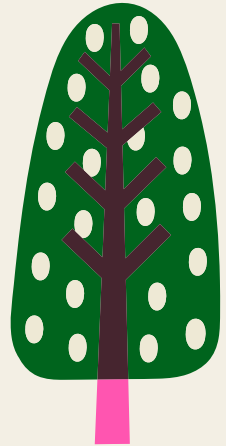
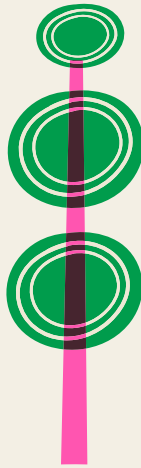
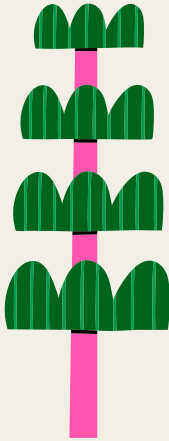
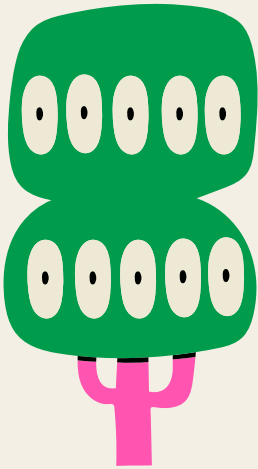
# Street Trees



**Your guide to all things trees**

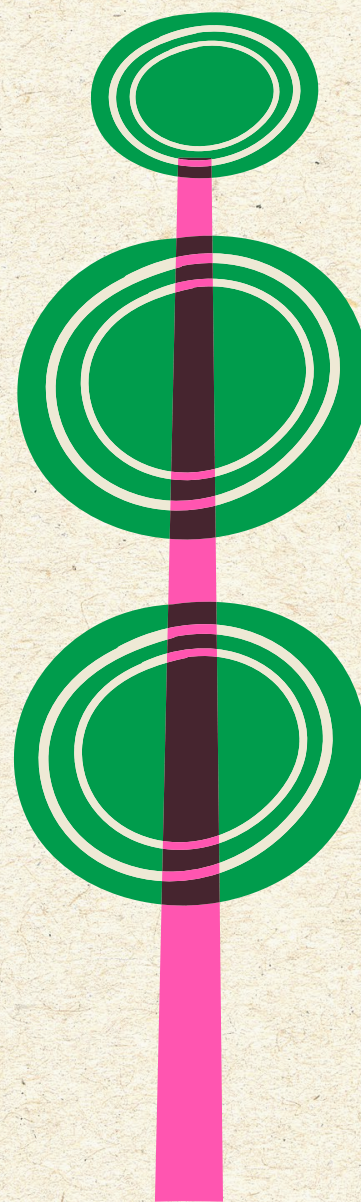
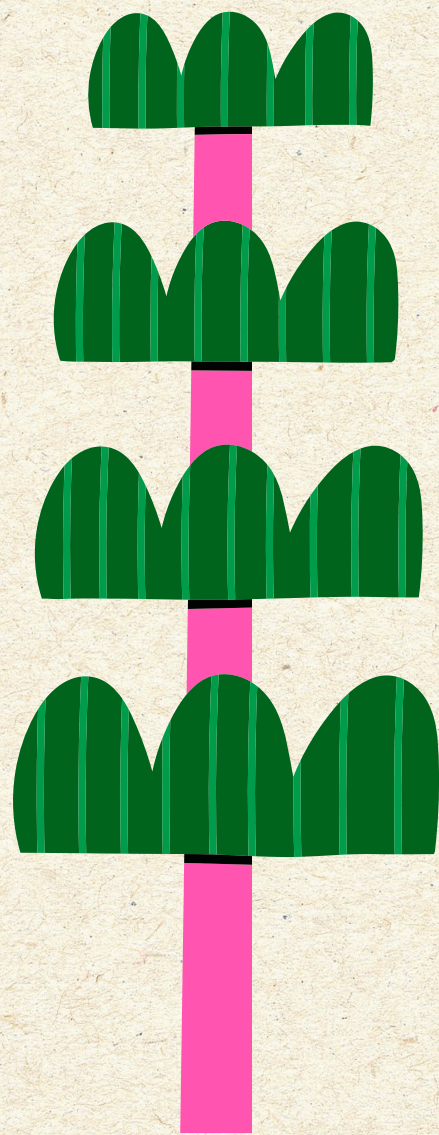
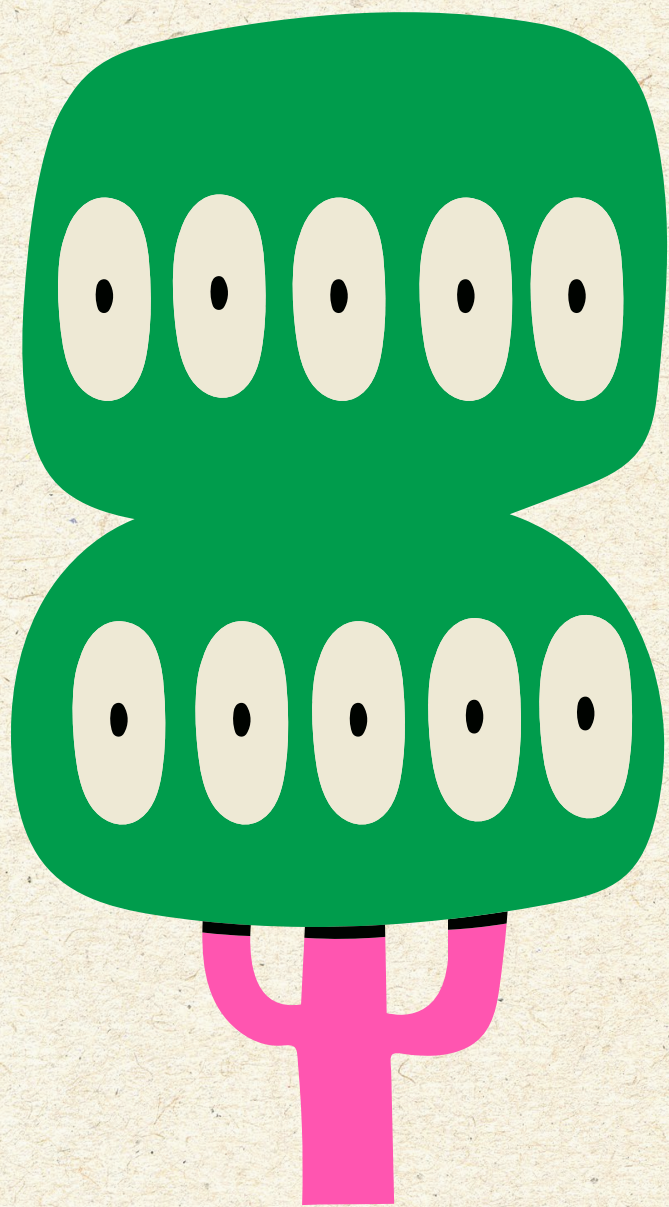
TOWN *of* CLAREMONT

# Street Trees



TOWN *of* CLAREMONT

# Street Trees



**Your guide to all things trees**



TOWN *of* CLAREMONT

# Street Trees

Your guide to all things trees



TOWN *of* CLAREMONT

# Street Trees

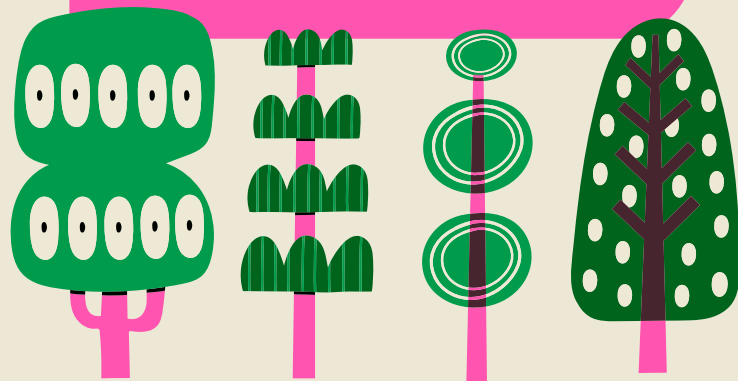
Your guide to all things trees

## I feel nervous about my tree dropping limbs. What should I do?

Many people panic when trees drop limbs or debris and believe the tree should be removed entirely. Most of the time these are perceived dangers. The Town employs suitably qualified personnel and contractors for all pruning and arboricultural assessments required on Town trees. Assessments on large and significant trees occur every two years as standard practice. Maintaining and protecting the trees that we have is vital for ensuring that our environment and cities remain livable for generations to come.

### Did you know?

A recent university study concluded that you have a 1 in 5 million chance of being killed by a tree when outdoors and a 1 in 189 million chance of being killed by a tree indoors. You are more likely to be attacked by a shark or injured in a car accident than by a tree. Research shows that for a branch to cause serious harm to property and people, it needs to be greater than 40 centimetres in diameter.

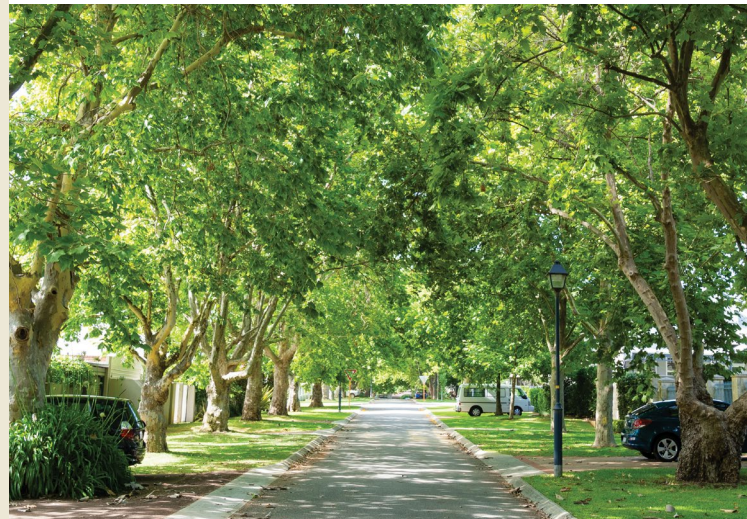


## Problems with neighbours' trees

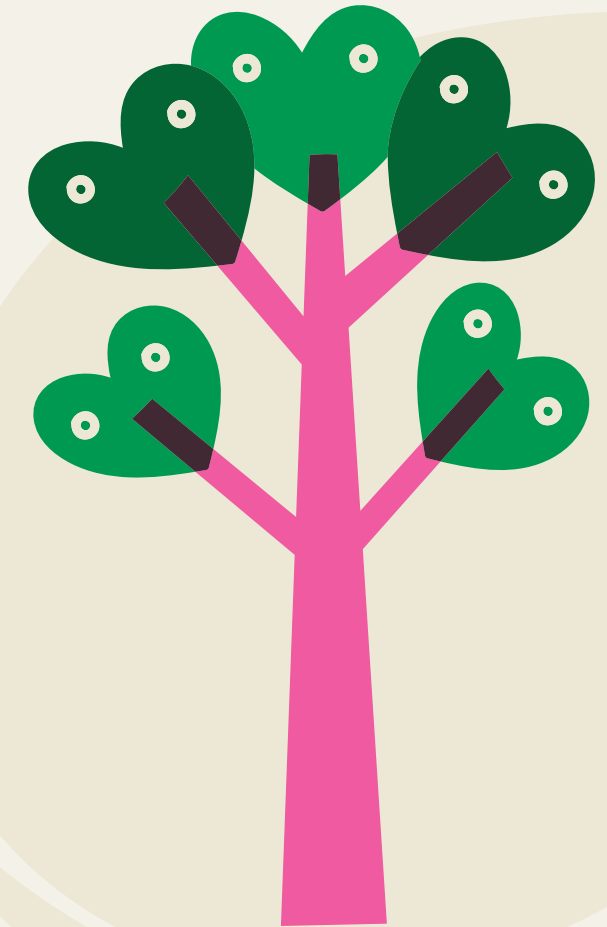
Are your neighbour's trees or roots encroaching onto your property and creating issues? We encourage you to approach your neighbour and try to come to a reasonable solution. If you require assistance and are met with resistance from your neighbours, you can contact the Citizens Advice Bureau 9221 5711 or Legal Aid 1300 650 579.

## I want to remove a large tree in my garden, what should I do?

We encourage you to call us before removing a large or significant tree on private property. Preserving the urban tree canopy in Perth is vital for generations to come and tree removal should only be considered as a last resort.



Town of Claremont  
308 Stirling Highway, Claremont 6010  
P: 9285 4300  
E: [toc@claremont.wa.gov.au](mailto:toc@claremont.wa.gov.au)  
[www.claremont.wa.gov.au](http://www.claremont.wa.gov.au)



Your guide to all things trees





## **I feel nervous about my tree dropping limbs. What should I do?**

Many people panic when trees drop limbs or debris and believe the tree should be removed entirely. Most of the time these are perceived dangers. The Town employs suitably qualified personnel and contractors for all pruning and arboricultural assessments required on Town trees. Assessments on large and significant trees occur every two years as standard practice. Maintaining and protecting the trees that we have is vital for ensuring that our environment and cities remain livable for generations to come.

### ***Did you know?***

A recent university study concluded that you have a 1 in 5 million chance of being killed by a tree when outdoors and a 1 in 189 million chance of being killed by a tree indoors. You are more likely to be attacked by a shark or injured in a car accident than by a tree. Research shows that for a branch to cause serious harm to property and people, it needs to be greater than 40 centimetres in diameter.

## **Problems with neighbours' trees**

Are your neighbour's trees or roots encroaching onto your property and creating issues? We encourage you to approach your neighbour and try to come to a reasonable solution. If you require assistance and are met with resistance from your neighbours, you can contact the Citizens Advice Bureau 9221 5711 or Legal Aid 1300 650 579.

## **I want to remove a large tree in my garden, what should I do?**

We encourage you to call us before removing a large or significant tree on private property. Preserving the urban tree canopy in Perth is vital for generations to come and tree removal should only be considered as a last resort.

Town of Claremont  
308 Stirling Highway, Claremont 6010  
P: 9285 4300  
E: [toc@claremont.wa.gov.au](mailto:toc@claremont.wa.gov.au)  
[www.claremont.wa.gov.au](http://www.claremont.wa.gov.au)



# TOWN of CLAREMONT **Street Trees**

Your guide to all things trees



## How do I find out about all things tree related?

We get a lot of questions from you about trees, like, how do I go about pruning, who collects my fallen branches and general pruning and maintenance queries. So, we thought we would give you some handy tips!

Here at the Town, sustaining and enhancing our leafy streets is a critical step towards supporting a greener and cleaner environment. So, we want you to know the best practises when it comes to caring for our trees.

### Request for tree pruning

We prune our street trees annually which includes uplifting low branches over roads and footpaths to provide safe access for vehicles, pedestrians, and cyclists. We encourage our trees to grow as close to their natural form as possible and will only prune them for the following reasons:

- To improve vision and access for vehicles and pedestrians;
- To improve the health of the tree;
- For requirements of Western Power & Main Roads;
- For safety reasons.

### Trees won't be pruned or removed for any of these reasons:

- If branches are over private property boundaries;
- If there is a perceived danger that the tree or a limb may fall;
- To enhance or clear views;
- If the species is disliked;
- To thin the canopy;
- Allergy and/or health problems;
- To prevent nuts, seeds, fruit or flowers dropping;
- Too much shade over lawns, gardens, houses, pools, solar panels etc;
- For the installation of non-essential crossovers or verge paving.

Any unauthorised pruning, removal, poisoning or vandalism of trees within the Town, undertaken by persons other than the Town or its contractors, is an offence and prosecution will occur.

We have some great policy and guideline documents here that you can read which will give you further information [www.claremont.wa.gov.au/Parks-and-Recreation/Trees](http://www.claremont.wa.gov.au/Parks-and-Recreation/Trees)



### My street tree overhangs my fence, can I prune it?

If branches are overhanging your fence line, you can prune on your side of the property up to the boundary line and only by using qualified arborists who are accredited members of the Tree Guild of WA. This is to ensure the correct pruning practises are followed for the safety and health of the tree. Pruning is not to be taken place over and onto Town land. Don't forget to send us a quote from the approved arborist outlining the scope of works for approval prior to the pruning works commencing.



Here is a helpful list of recommended arborists  
[www.treeguildwa.asn.au/dev/contractors-guide/](http://www.treeguildwa.asn.au/dev/contractors-guide/)

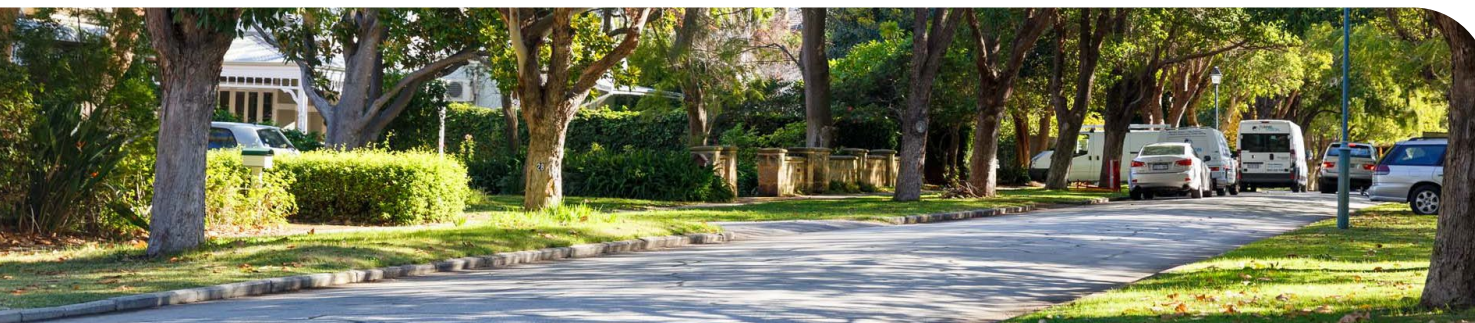
### Did you know?

Contrary to popular belief, heavy pruning does not make a tree safer. It can have the opposite effect due to the new growth being weaker than the original wood. Trees grow in a delicate balance with their surroundings and removing large limbs can negatively alter the way they grow, as well as increase the risk for infection and disease.

### Collection of fallen branches

If a tree branch falls on the verge outside your property, we encourage you to place it in your green waste bin. If it is too big for the bin, please call 9285 4300 and a Parks Field Officer or contractor can attend to it.

Green waste collection occurs three times per year. You can find more information here (QR code)



## How do I find out about all things tree related?

We get a lot of questions from you about trees, like, how do I go about pruning, who collects my fallen branches and general pruning and maintenance queries. So, we thought we would give you some handy tips!

Here at the Town, sustaining and enhancing our leafy streets is a critical step towards supporting a greener and cleaner environment. So, we want you to know the best practises when it comes to caring for our trees.

### Request for tree pruning

We prune our street trees annually which includes uplifting low branches over roads and footpaths to provide safe access for vehicles, pedestrians, and cyclists. We encourage our trees to grow as close to their natural form as possible and will only prune them for the following reasons:

- To improve vision and access for vehicles and pedestrians;
- To improve the health of the tree;
- For requirements of Western Power & Main Roads;
- For safety reasons.

### Trees won't be pruned or removed for any of these reasons:

- If branches are over private property boundaries;
- If there is a perceived danger that the tree or a limb may fall;
- To enhance or clear views;
- If the species is disliked;
- To thin the canopy;
- Allergy and/or health problems;
- To prevent nuts, seeds, fruit or flowers dropping;
- Too much shade over lawns, gardens, houses, pools, solar panels etc;
- For the installation of non-essential crossovers or verge paving.

Any unauthorised pruning, removal, poisoning or vandalism of trees within the Town, undertaken by persons other than the Town or its contractors, is an offence and prosecution will occur.

We have some great policy and guideline documents here that you can read which will give you further information [www.claremont.wa.gov.au/Parks-and-Recreation/Trees](http://www.claremont.wa.gov.au/Parks-and-Recreation/Trees)



### My street tree overhangs my fence, can I prune it?

If branches are overhanging your fence line, you can prune on your side of the property up to the boundary line and only by using qualified arborists who are accredited members of the Tree Guild of WA. This is to ensure the correct pruning practises are followed for the safety and health of the tree. Pruning is not to be taken place over and onto Town land. Don't forget to send us a quote from the approved arborist outlining the scope of works for approval prior to the pruning works commencing.



Here is a helpful list of recommended arborists  
[www.treeguildwa.asn.au/dev/contractors-guide/](http://www.treeguildwa.asn.au/dev/contractors-guide/)

### Did you know?

Contrary to popular belief, heavy pruning does not make a tree safer. It can have the opposite effect due to the new growth being weaker than the original wood. Trees grow in a delicate balance with their surroundings and removing large limbs can negatively alter the way they grow, as well as increase the risk for infection and disease.

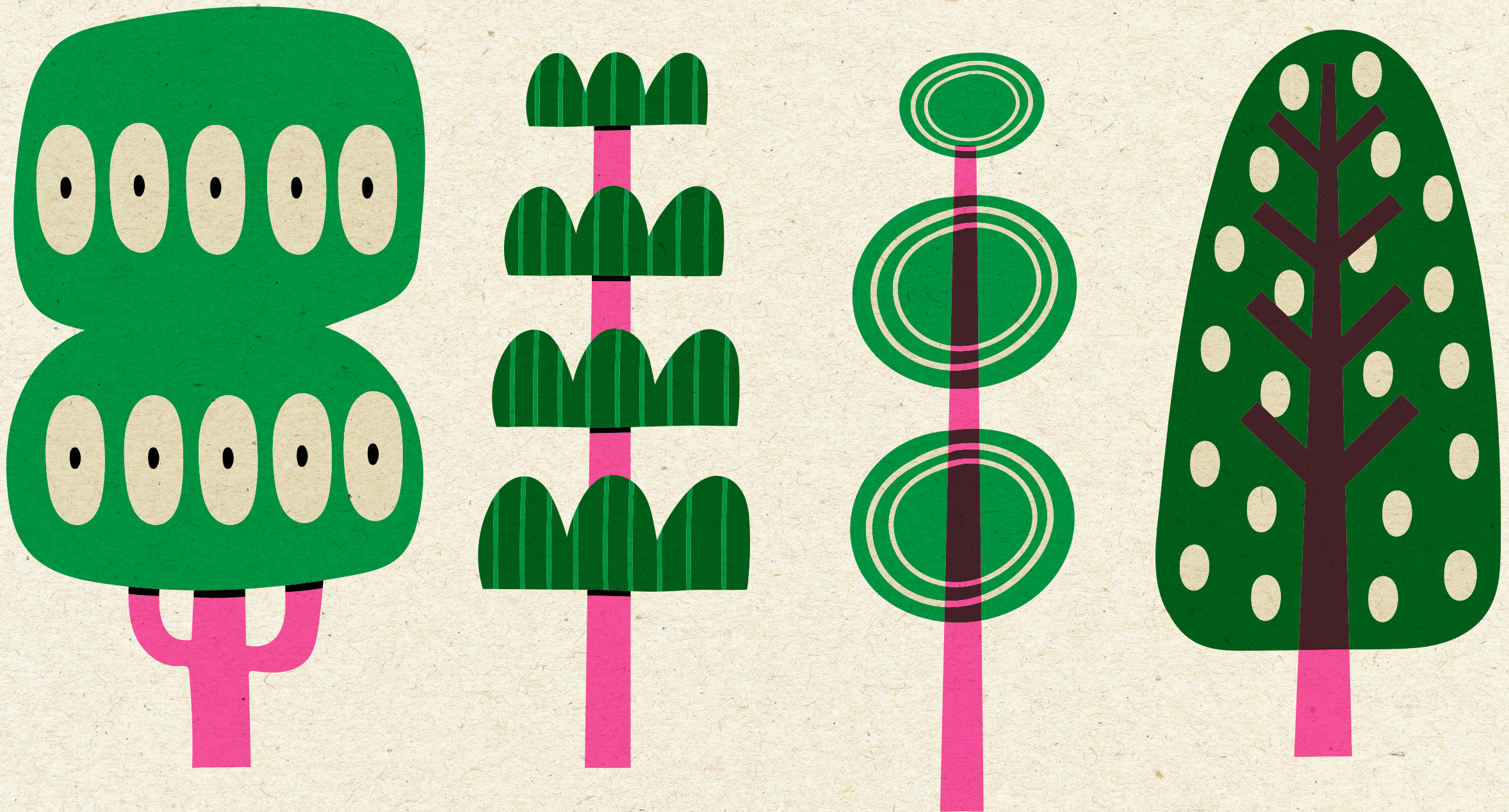
### Collection of fallen branches

If a tree branch falls on the verge outside your property, we encourage you to place it in your green waste bin. If it is too big for the bin, please call 9285 4300 and a Parks Field Officer or contractor can attend to it.

Green waste collection occurs three times per year. You can find more information here (QR code)

TOWN *of* CLAREMONT

# Street Trees



**Your guide to all things trees**